

SafeVita

Keeping you safe from CBRN-hazards around the clock



BRUHN
NEWTECH
LIFE SAVING SOFTWARE SOLUTIONS

CONTENT



WHO WE ARE — ABOUT BRUHN NEWTECH

WHERE WE OPERATE — CBRN

WHAT WE DO — SAFEVITA

WORLD'S LEADING PROVIDER IN CHEMICAL, BIOLOGICAL, RADIOLOGICAL AND NUCLEAR (CBRN) KNOWLEDGE MANAGEMENT SOFTWARE



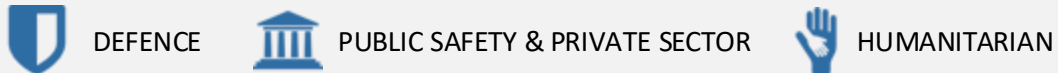
PROVEN ON THE FRONTLINE

Our software solutions always keep an open eye on invisible and airborne threats

- Solutions cover +80% of NATO forces
- 30+ years of experience with CBRN
- Proven critical value in conflict zones
- Making cities smarter and safer
- Help saving lives
- Keeping citizens safe & bringing military home



ADDRESSING THREE CRITICAL SEGMENTS



WITH 360° SOFTWARE

- CBRN Software
- Integration and API
- Training & Facilitation
- Support & Maintenance

AWARDED BY NATO & EU

- Awarded participation to NATO CBRN Knowledge Management Panel in 2001
- Awarded European Defence Fund projects (EDIDP-2021 and EDF-2022)

USED BY CLIENTS WORLDWIDE





THREAT FROM AIRBORNE TERROR





WHY DO WE EXIST?

Bruhn NewTech exists to increase the number of people **protected** from airborne threats.

One human life at a time.

773915

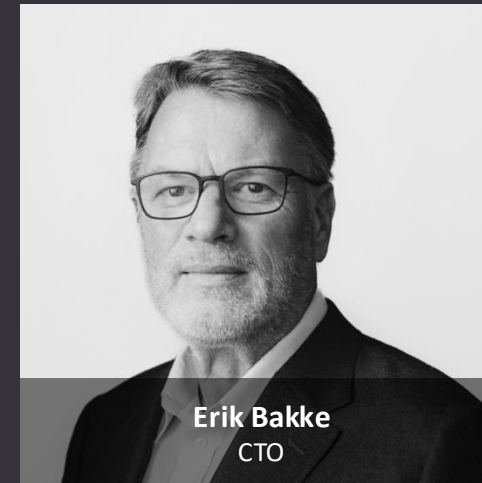
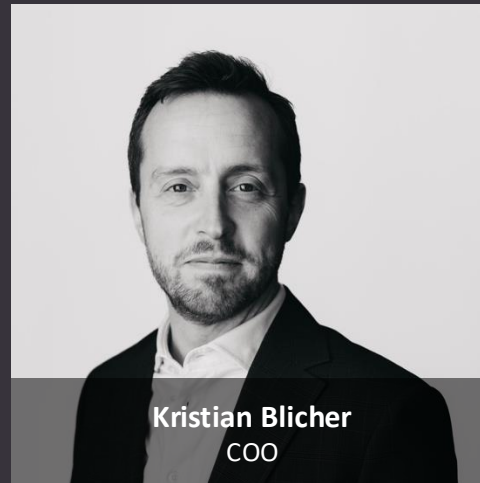


OUR MANAGEMENT

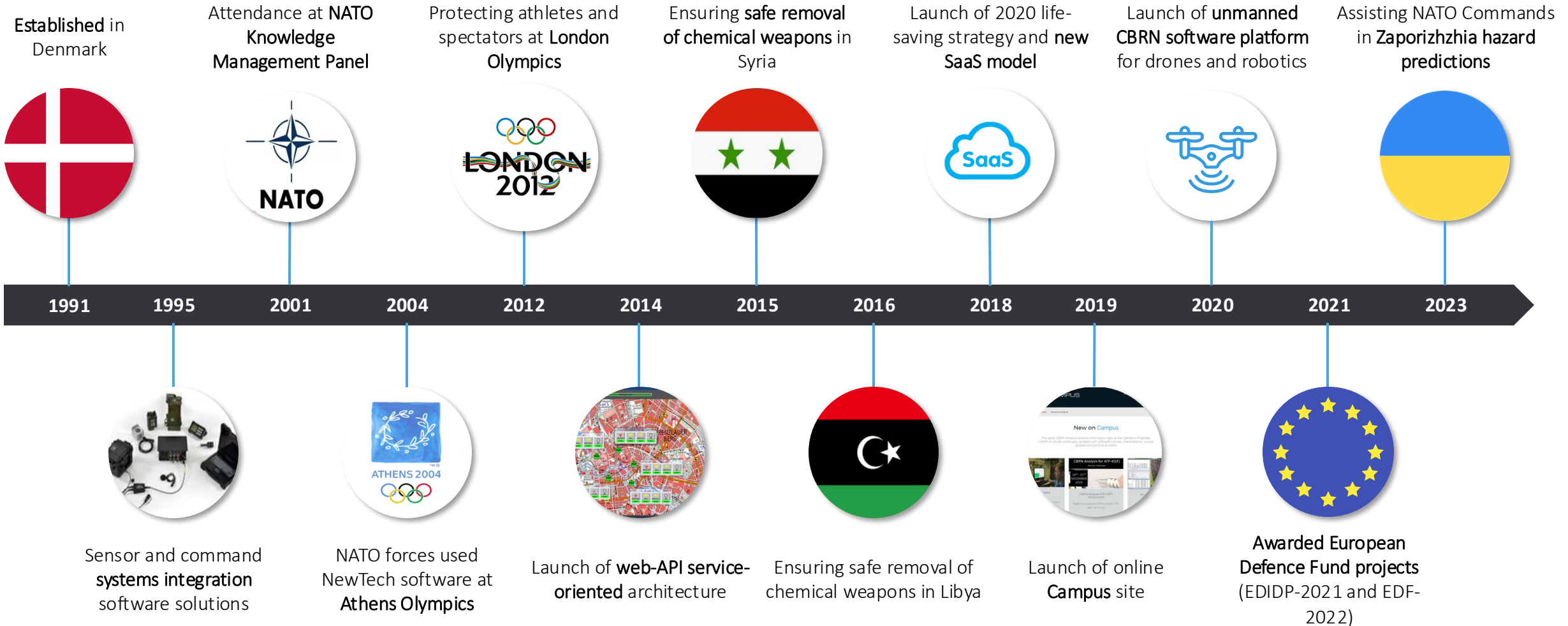
Combined more than
50 years of experience in
software development and
digital transformation.

Commercialised and
awarded innovations in the
public safety and defence
market.

Educational Master levels -
Law, Economics, Business
Administration, Computer
Science.



MILESTONES FROM MORE THAN 25 YEARS OF SPECIALISATION



CONTENT

WHO WE ARE — ABOUT BRUHN NEWTECH

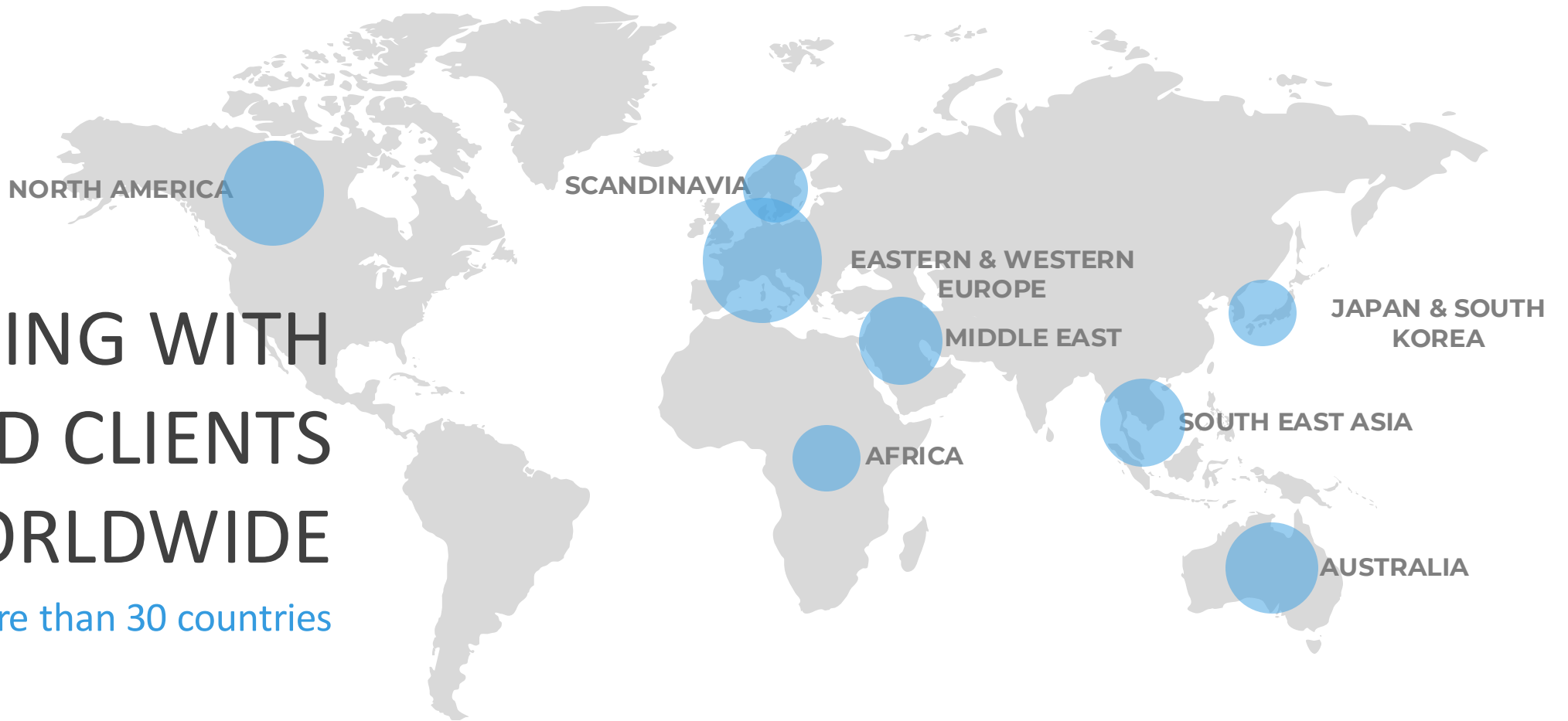


WHERE WE OPERATE — CBRN

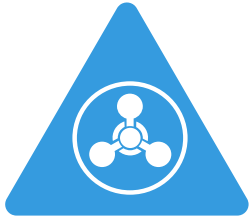
WHAT WE DO — SAFEZONE

WORKING WITH ESTEEMED CLIENTS WORLDWIDE

in more than 30 countries



WE PROTECT AGAINST HAZARDS FROM



Chemical

Toxic industrial materials
Chemical warfare agents



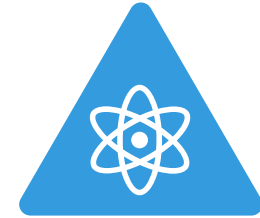
Biological

Biological agents
such as anthrax
Terrorist-produced toxins
such as ricin



Radiological

Radiologically exposed
sources, e.g. from medical
facilities
Dirty bombs
Releases from
nuclear power plants



Nuclear

Nuclear weapons

WHERE WE OPERATE



CONTENT

WHO WE ARE — ABOUT BRUHN NEWTECH

WHERE WE OPERATE — CBRN



WHAT WE DO — SAFEVITA

OVERVIEW OF SAFEVITA

The threat from Chemical, Biological, Radiological and Nuclear (CBRN) incidents is moving from **military battlefields into urban areas**. Human, societal and financial impact would be devastating and the invisible and widely dispersed hazards extremely difficult to neutralize once airborne.

We have developed our SafeVita solution as a fully automated CBRN management tool that **guides security officers and first responders through every step of understanding and managing CBRN risks as well as preventing mass casualties**.



SafeZone Solution



Response plans (evacuation / rescue) defined in **30 seconds** after hazard alert.



Response system **integrated** with HVAC / fire systems to contain invisible threats.



Interoperable by design, supporting 50+ sensors from 20+ global manufactures.



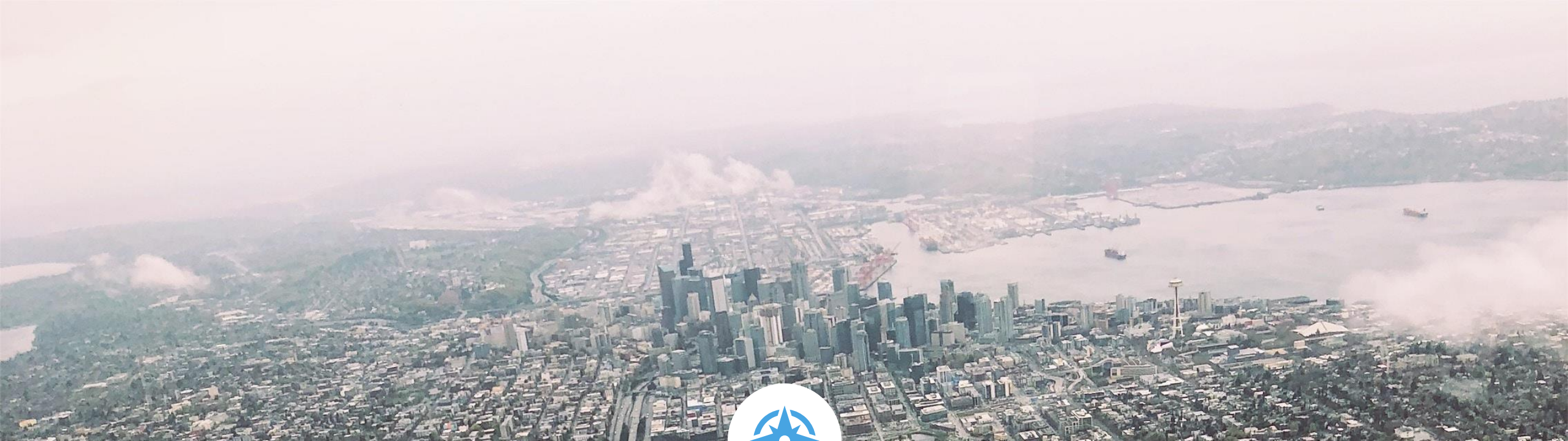
Highly-robust **military-grade** assets ported to be used by and protect civilians.



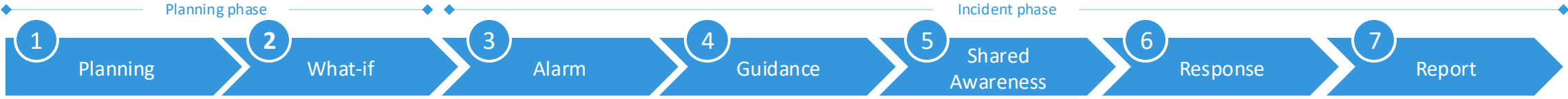
Joint detection & **indoor prediction** models to update plans in real-time.



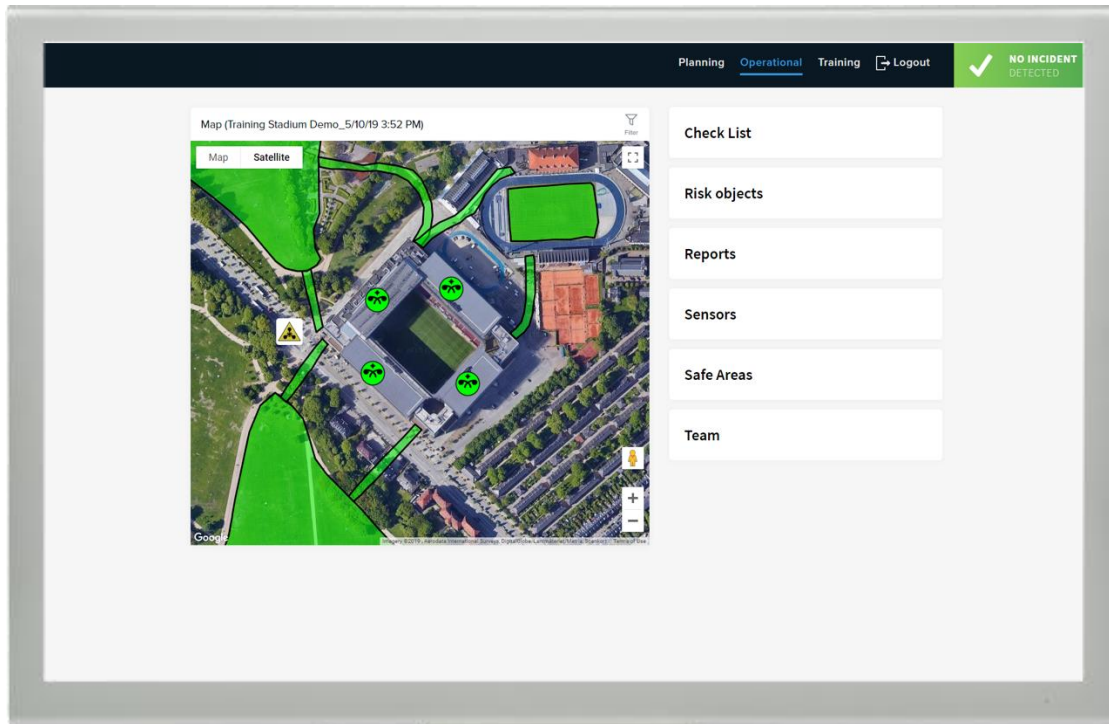
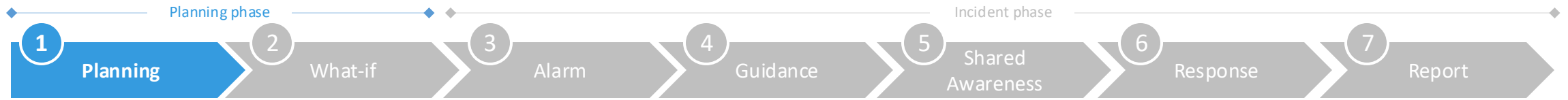
Public emergency services auto-notified on the **specificity** of the CBRN threat.



SafeVita Timeline



Incident Management in real time



Prior to deploying SafeZone, a site survey has established fixed sensor placements and response plans. The map shows the location of:



Fixed and mobile P-sensors and their status



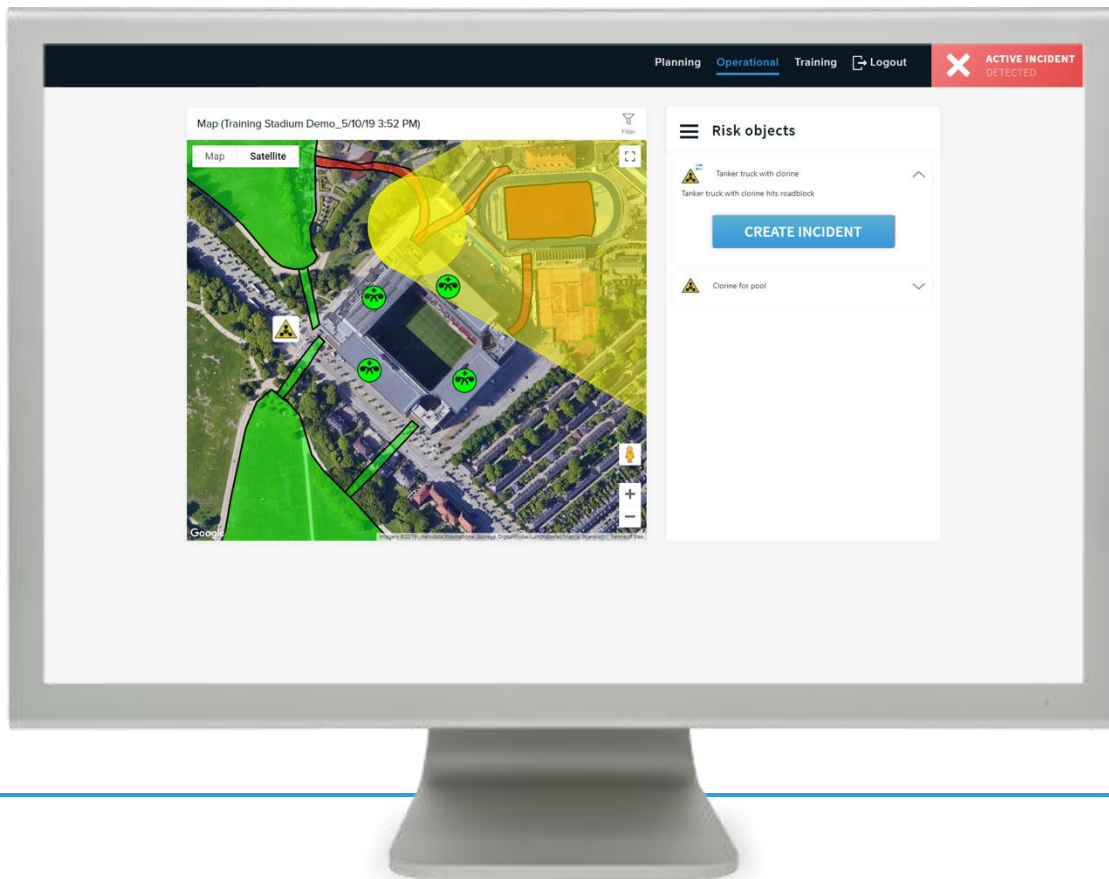
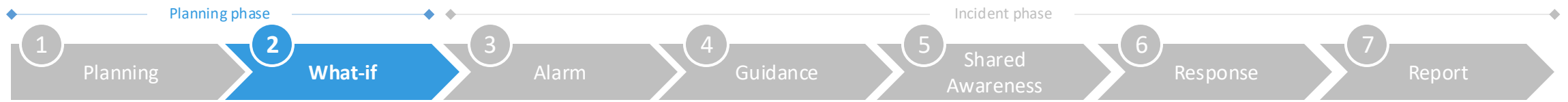
Evacuation routes and planned safe areas



Pre-planned potential risks

Based on this picture, personnel can monitor the current situation.

Incident Management in real time

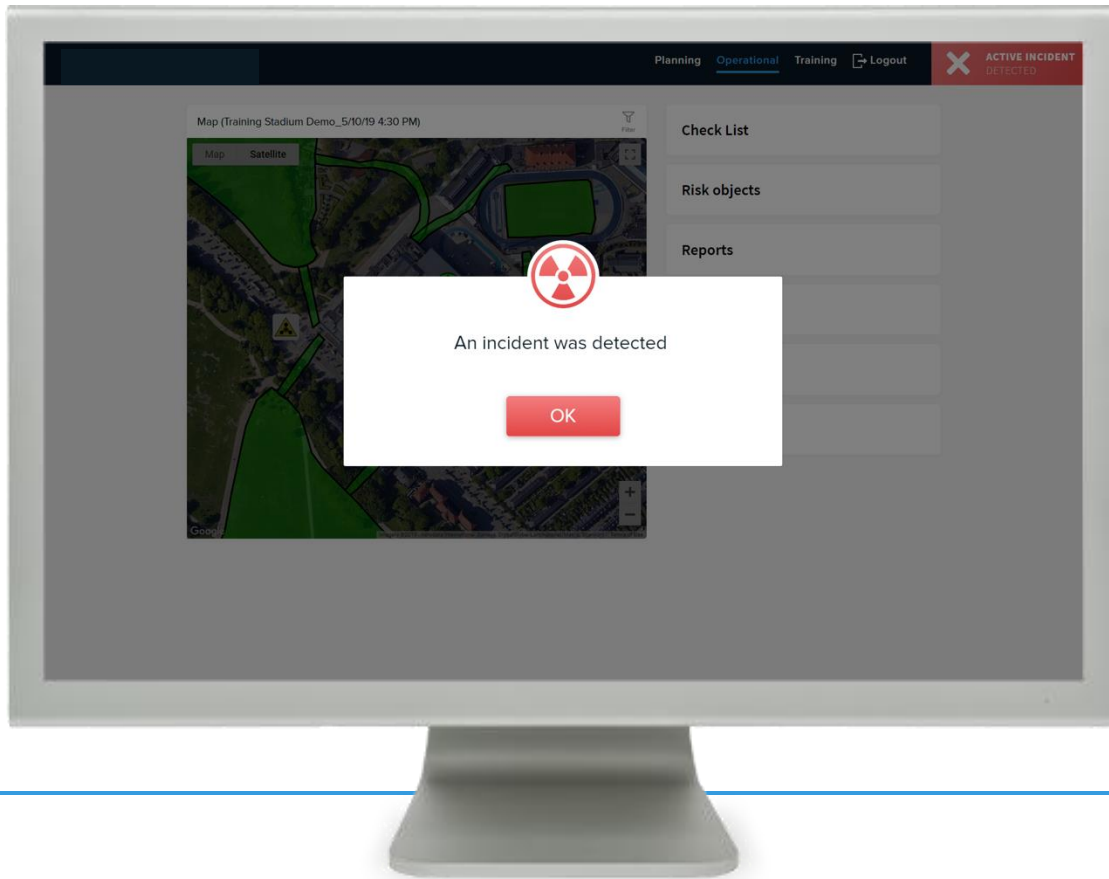
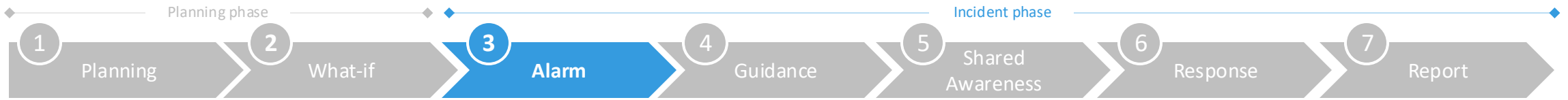


Any pre-planned risks can be evaluated by creating a what-if analysis to see the potential hazard if an incident should occur.

Hazard areas can be based on current or forecast weather and the resulting evacuation plans can be determined.



Incident Management in real time

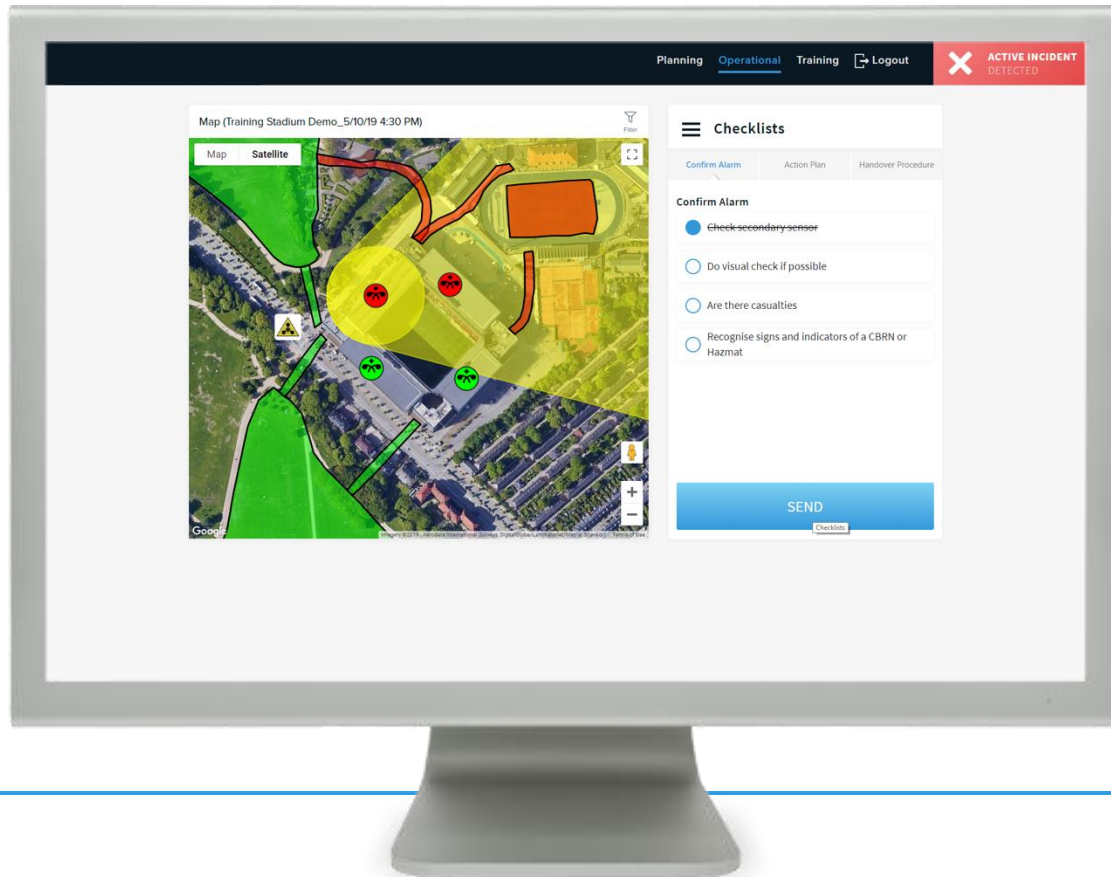
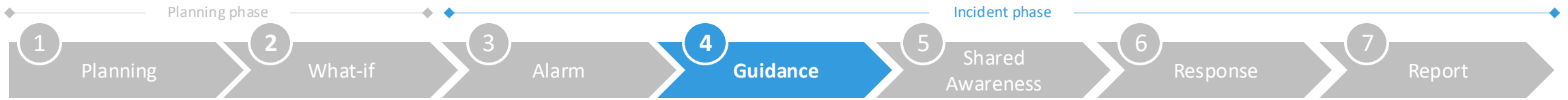


A sensor has detected a dangerous airborne substance

In the control room: The security guard hears an alarm on the selected speaker/headphones in control room



Incident Management in real time

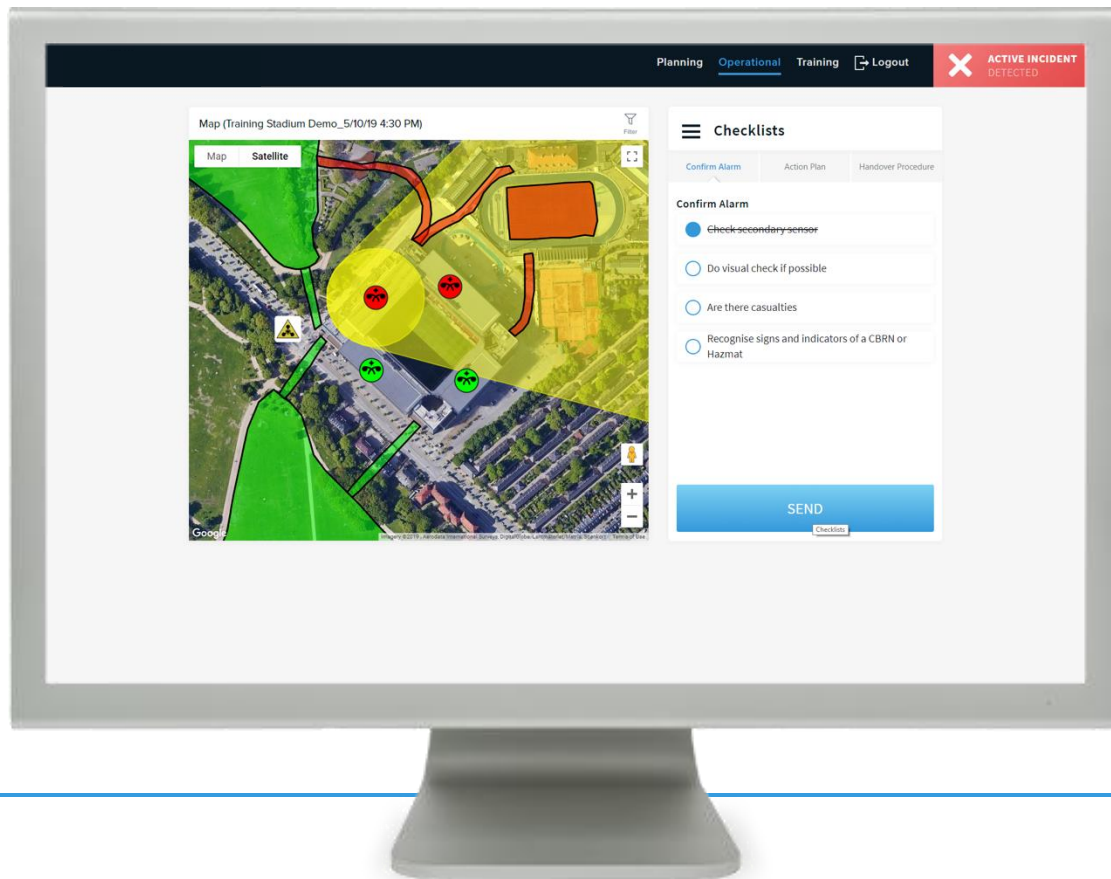
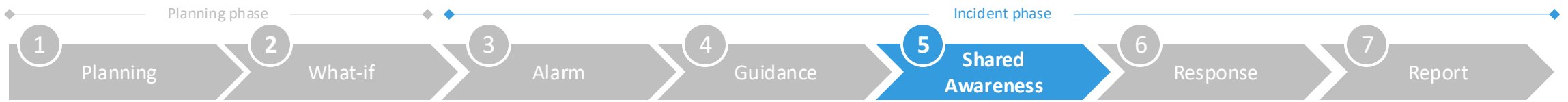


Safezone provides an **immediate visual overview** of the situation and the direction towards which the hazard is moving.

The relevant **Checklist** is shown to guide response following pre-defined plans.



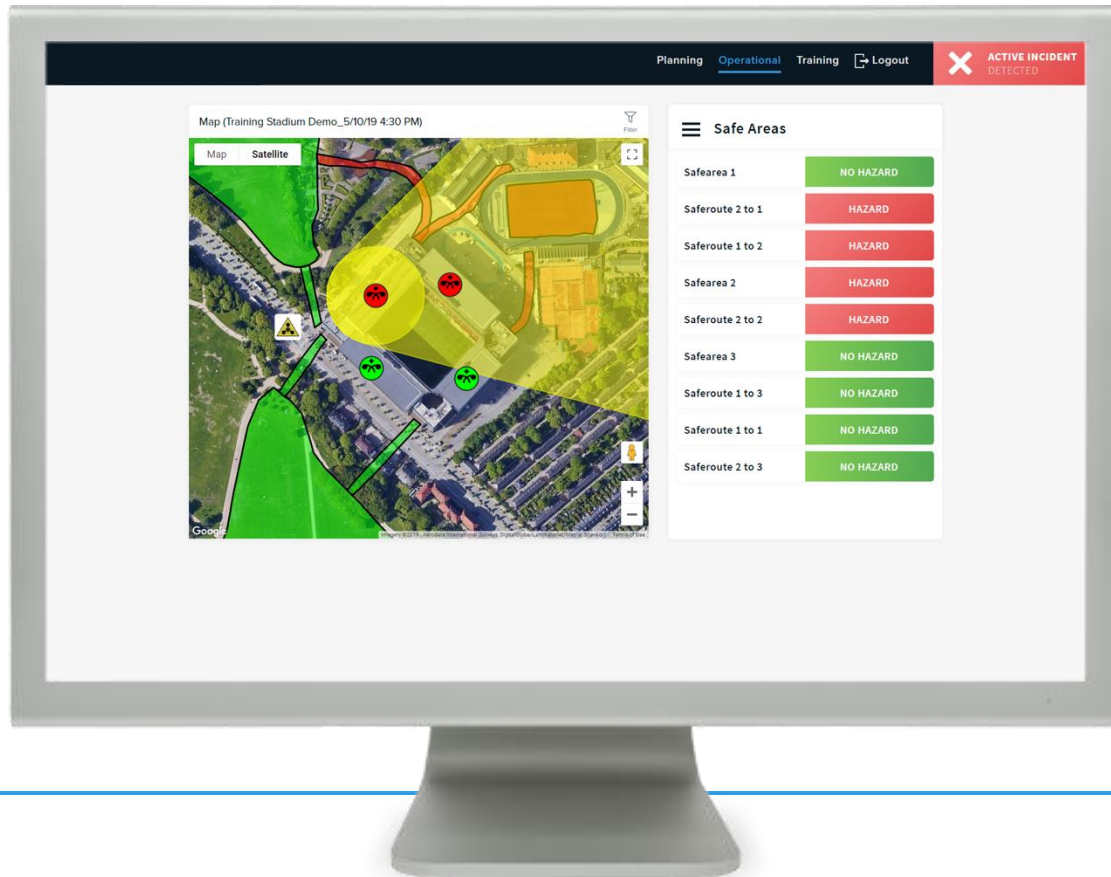
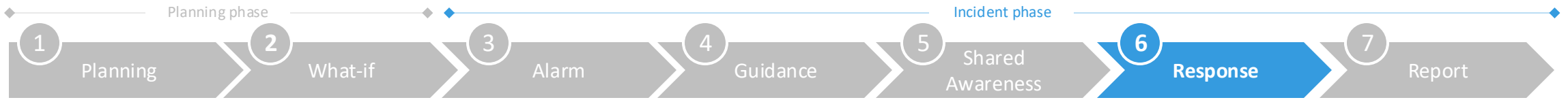
Incident Management in real time



On-site: Security personnel on ground can **assess the real on-going situation** and share status by **checking items on their app**. As actions are ticked off by control room staff or deployed teams this is instantly visible to all.



Incident Management in real time



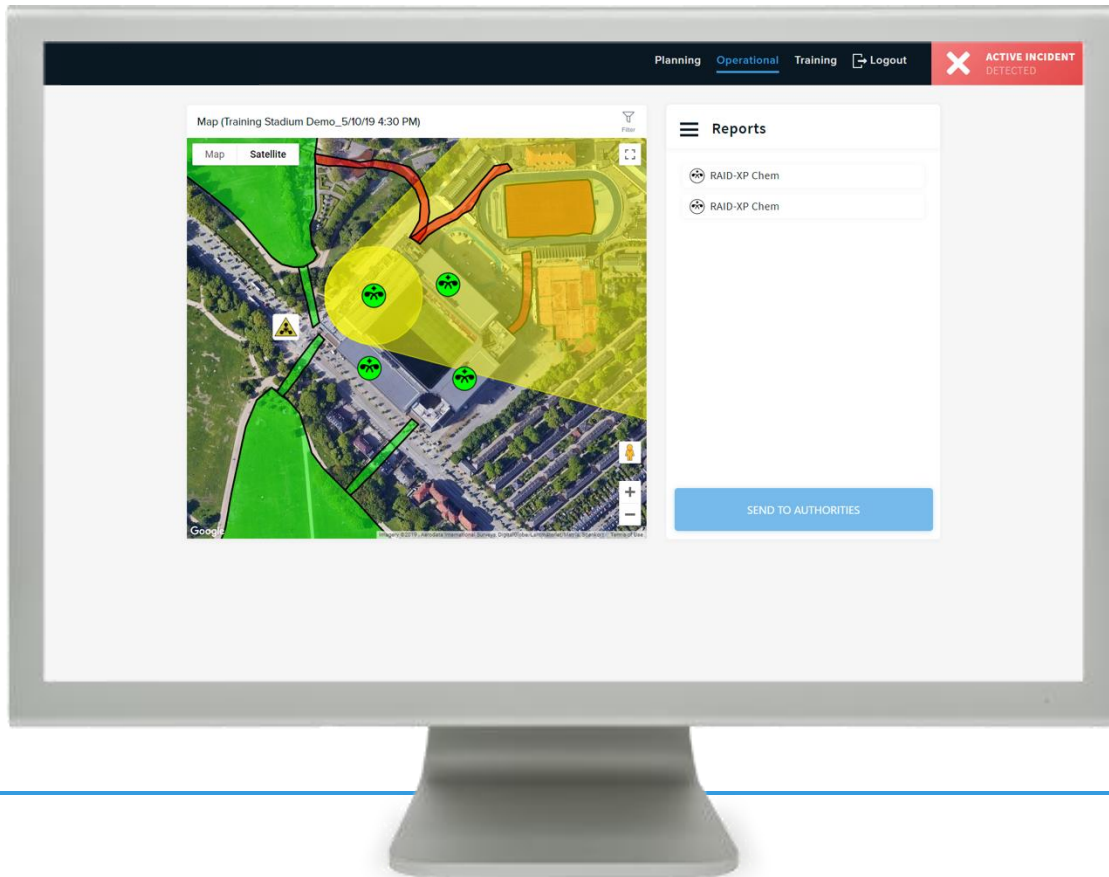
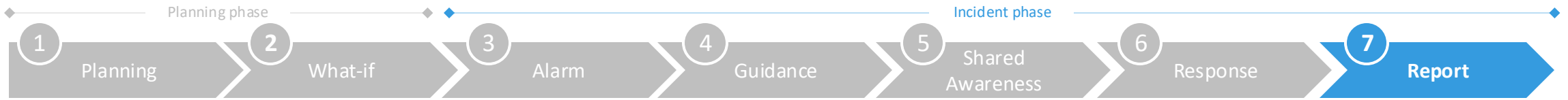
The situation is clearly displayed and the sensors that detected a threat are now in red.



Hazard areas (yellow) and routes (red) that are in danger are clearly visible

The feature **Safe Areas** provides an intuitive list of safe areas and evacuation routes

Incident Management in real time



The relevant authorities can access SafeZone to monitor events remotely.

Safezone's **Report section** can also be used to distribute a full report of the incident providing details to emergency services either automatically or on demand.






THANK YOU



CONTACT DETAILS

 info@bruhn-newtech.com

 +45 3955 8000

 bruhn-newtech.com

DK OFFICE

 Bruhn NewTech A/S
Kongens Nytorv 15-17, 3.
1050 Copenhagen
Denmark

UK OFFICE

 Bruhn NewTech Ltd
Warner House, 123 Castle Street
Salisbury, SP1 3TB
United Kingdom